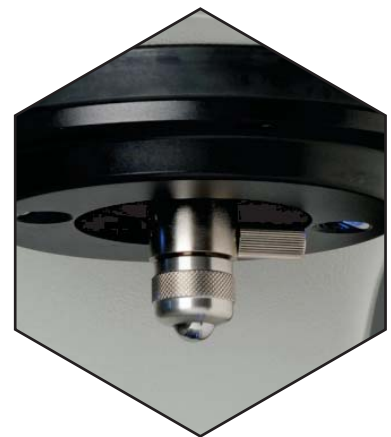


LCB3100 Brinell

Load Cell Hardness Tester

Using state-of-the-art load cell technology, this is one of the most versatile and easy-to-use Brinell Hardness Testers available. Operation is handled through a user-friendly touch-pad, virtually eliminating errors by removing the use of knobs and the stacking of weights typically associated with most testers. Simply choose the load on the operation panel and let the tester do the rest.

- Twelve selectable loads to choose from
- Heavy-duty cast housing with enclosed load cell
- Direct load method with load-cell feedback
- Auto-apply, -hold, and -removal of loads
- Selectable dwell times
- User-friendly touch-pad operation panel



Specifications

Load (kgf)	62.5, 100, 125, 187.5, 250, 500, 750, 1000, 1500, 2000, 2500, 3000 kgf
Dwell Time	5 to 60 seconds
Max. Specimen Height	10 in (255 mm)
Max. Specimen Depth	6.7 in (170 mm)
LED Display	4-digit kg display
Accuracy	Conforms to ASTM-E10 and ISO 6506
Dimensions	8 in W x 21 in D x 32 in H (220 mm W x 550 mm D x 810 mm H)
Weight	Approx 300 lb (136 kg)
Power Supply	Single phase, 100 V~ to 240 V~ (auto detected), 50/60 Hz

Standard Accessories

Anvil, Flat (2.5 in/60 mm)
Anvil, V (3.5 in/90 mm)
Hardness Standard
Ball Indenter (0.4 in/10 mm)
Leveling Legs
Power Cord
Dust Cover
Instruction Manual
Hardness Conversion Table
Accessory Box

Part Numbers

863-783-756	LCB3100 Brinell Hardness Tester
-------------	---------------------------------

V~ denotes VAC.

Specifications and part numbers may change.

Consult LECO for latest information.